



**Energy efficient heating and
drying through infrared**

WHO WE ARE

- Manufacturer of infrared emitters (electrical or gas operated)
- Design and manufacturing of infrared systems for all kinds of industrial heating and drying processes
- Family-owned and operated SME
- Founded in 1996
- Currently handing over to second generation



HOW INFRARED WORKS



- Infrared radiation generates heat by hitting the surface of a workpiece and generating electromagnetic waves.
- In contrary to other heating methods, no other medium (i.e. air) is required.
- This leads to a quicker and more efficient heating process.

WHERE CAN IT BE APPLIED

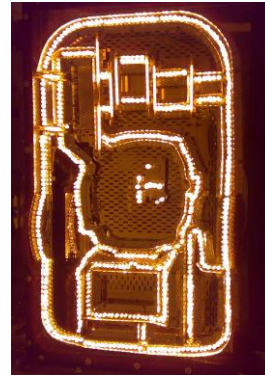
Infrared can be applied almost anywhere, where a material needs to be heated, dried or tempered



Powder Coating



Drying of stone plates



Plastics Welding



Heating under vacuum

WHERE CAN IT BE APPLIED



Even barbecuing is possible...

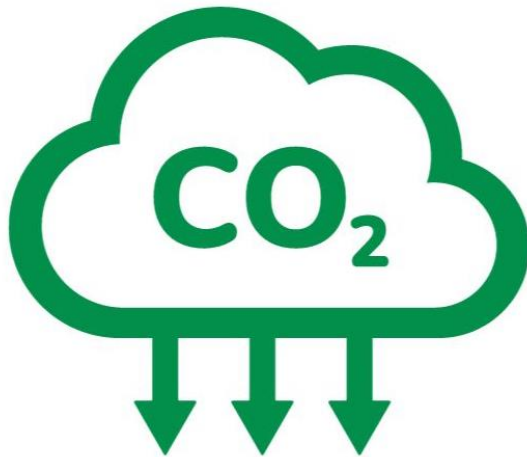


HOW DOES INFRARED CONTRIBUTE TO SUSTAINABILITY

1. Direct heat transfer to workpieces.
→ Less energy is lost to heating surroundings
2. Quicker drying/ heating
→ Reduction of overall process times
3. No pre-heating times
→ Infrared starts working immediately
4. Precise heat transfer
→ Heating of specific areas on the workpiece eliminates unnecessary energy consumption



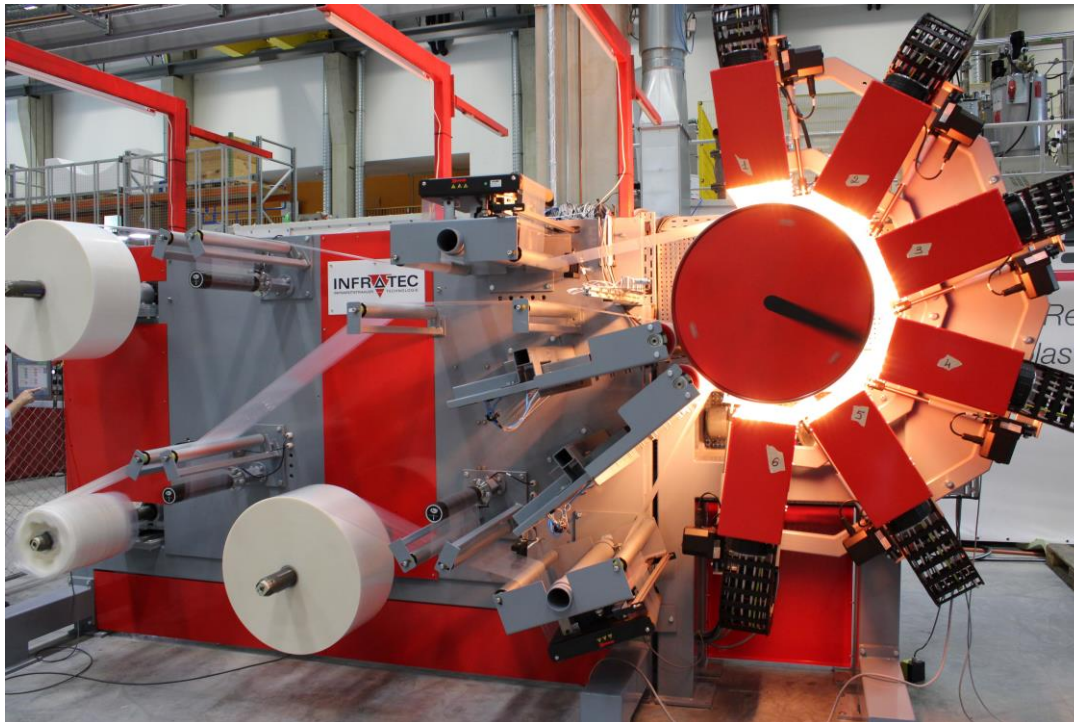
HOW DOES INFRARED CONTRIBUTE TO SUSTAINABILITY



Reduced Emissions

In many areas electrical infrared can replace fossil fueled heating sourced, which is a big step towards climate neutral productions.

EXAMPLE: GLUELESS LAMINATION



Previous ZIM project

**Lamination of foil and
non-woven materials**

**Elimination of glue
from the process**

Products: i.e. diapers

**Less waste – easier
recycling**

**Improved skin-
friendliness**

CONTACT US HERE!



Lohmühleweg 24

72213 Altensteig

Telefon: +49 (0) 7453/ 93800-11

Fax: +49 (0) 7453/ 93800-30

E-Mail: Anika.Pfeiffer@infratec.com

Web: <http://www.infratec.com>



Flight approved ✓

Flight on track ✓

Flight completed ✓

WX: wind 7-kts, cloudy
Flight: arrived on time
Battery SoC: 60%
UTM: flight completed

Automating unmanned aviation to benefit everyone

29.02.2024 – Christoph Schlettig

Unisphere in a nutshell – a team of aviation & innovation experts with a legacy in the pioneering Solar Impulse flight around the world



TECHNISCHE UNIVERSITÄT DRESDEN

TUI fly

SOLARIMPULSE
AROUND THE WORLD IN A SOLAR AIRPLANE

DLR

Christoph Schlettig - CEO



Universiteit Leiden
The Netherlands

Berkeley
Sutardja Center for Entrepreneurship & Technology

FESTO

KILOMETER 1

Dr. Christoph Selig - CCO



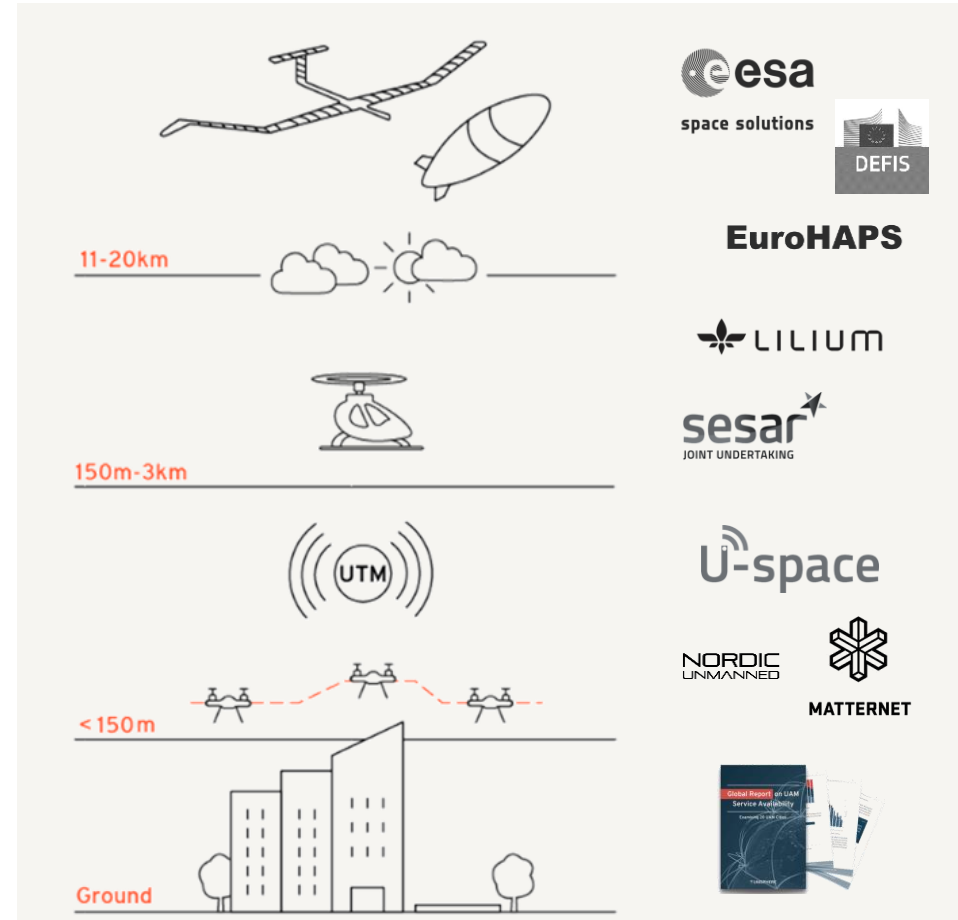
SOLARIMPULSE
AROUND THE WORLD IN A SOLAR AIRPLANE

GROB AIRCRAFT

HM

Michael Anger - CTO

- Founded in 2017 in Konstanz
- Experts for automated and unmanned flight operations
- 19 People, based in Konstanz, Munich and Paris
- Transferring pilot knowhow into reliable technologies
- Active in pioneering projects from ground to stratosphere



Solar Impulse - the first circumnavigation of the world by an electrically powered and partly-automated aircraft




SOLARIMPULSE

AROUND THE WORLD IN A SOLAR AIRPLANE

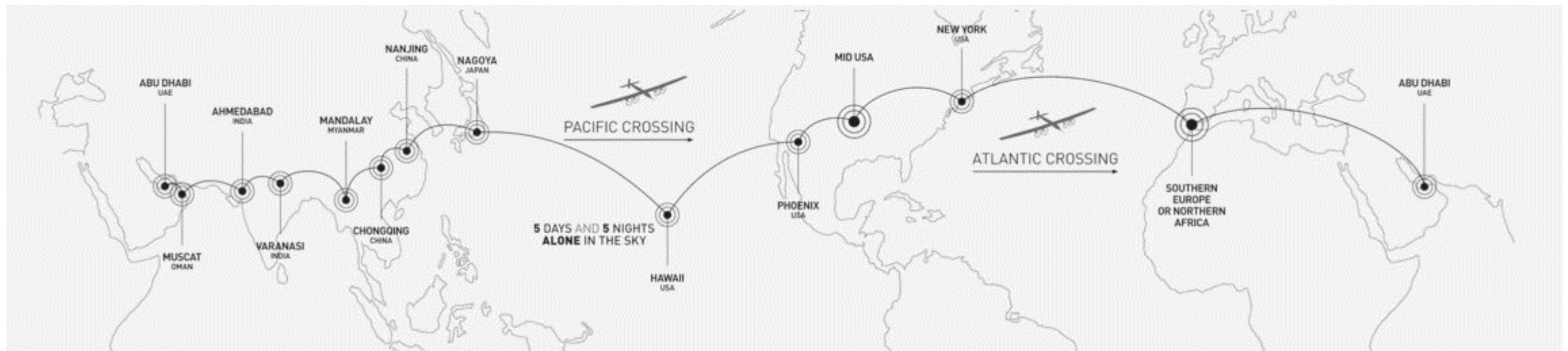


 17 flights

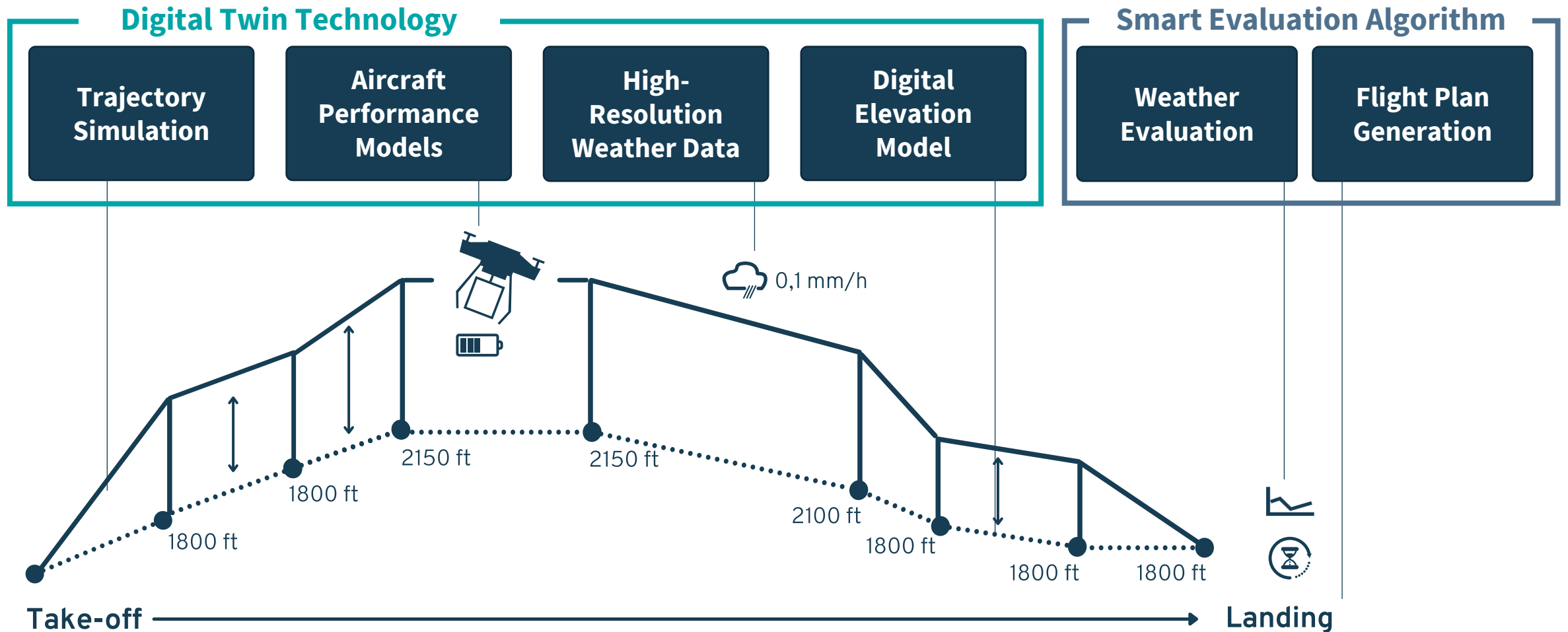
 43.000 km

 7 countries

 550 flight hours



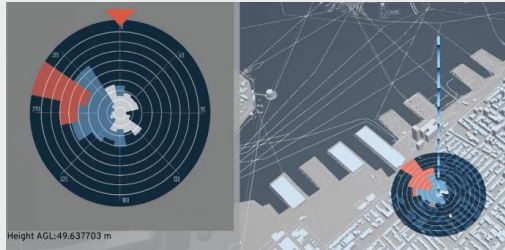
Smart 4D Trajectory – combines digital twinning technologies with pilot knowhow & decision-making-mechanism



The Smart 4D Trajectory is used to automatically analyze and evaluate **weather forecast** or **historic weather data**



Operational Analytics for Urban Air Mobility



Historic Weather Data

- Data-driven analytics of past operational conditions evaluating weather impact on future flight operations
- Supporting vertiport planning, eVTOL design verification, and evaluation of air taxi service viability
- Detailed understanding of future operating conditions

NOVA Digital Co-Pilot for flight operations



High-resolution weather forecast & observations

- Operations Management platform for drone and air taxi operations
- Pilot know-how and decision-making mechanism transferred to technology
- Underlying simulation technology designed to support piloted and fully autonomous drone operations

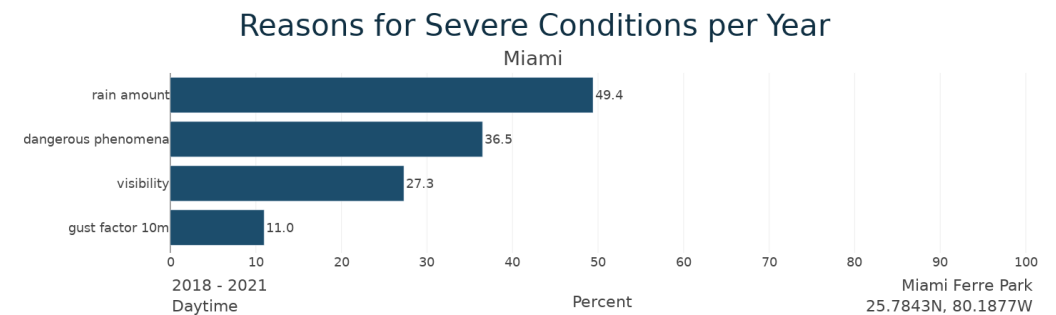
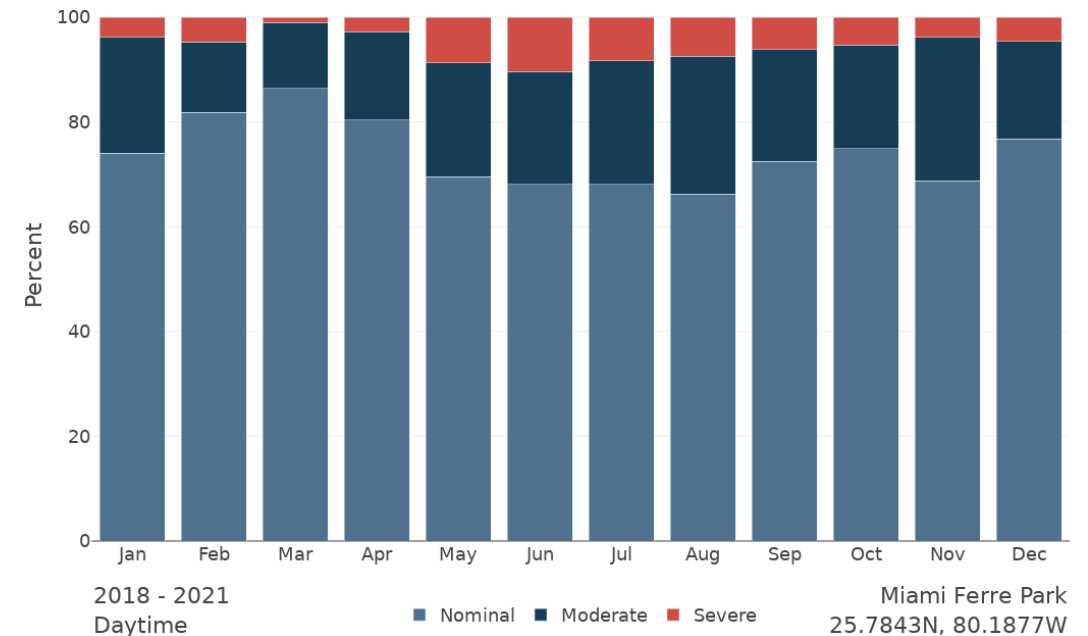
Smart 4D Trajectory Technology

Operational Analytics – **tailored analysis** of historic weather data and evaluation of the impact on future eVTOL flight operations



- Weather data is evaluated on an hourly basis, usually 2018 - 2023.
- Given the timeframe and number of parameters approx. 800,000 data points are analyzed
- If in a given hour one parameter is beyond the limit of *nominal* it is considered *moderate or severe*

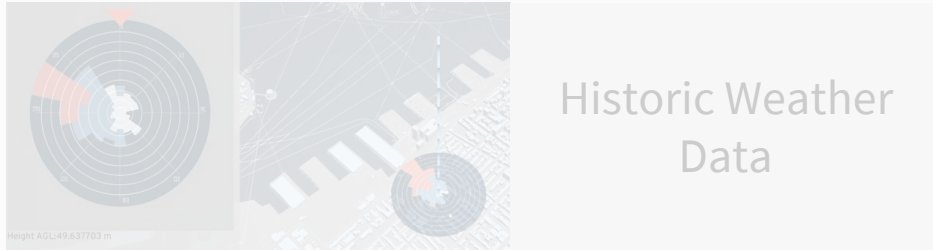
WX Group	Parameter	Nominal	Moderate	Severe
Visibility	Visibility	> 5000 m	5000-1500 m	< 1500 m
	Ceiling	> 500 m	500-150 m	< 150 m
Wind	Mean Wind speed	< 15 kn	15-20 kn	> 20 kn
	Gust Factor	< 10 kn	10-15 kn	> 15 kn
Temperature	OAT range	-20 to +40 °C	-30 to -20 / +40 to +50 °C	<-30/>+50 °C
Precipitation	Rain amount	< 2.5 mm/h	2.5-7.6 mm/h	>7.6 mm/h
Icing ¹ (new)	General Icing	Always classified as severe		
Dangerous Phenomena	Thunderstorm	Always classified as severe		
	Sand- or dust storm			
	Funnel clouds			
	Freezing rain			
	Squall			
	Ice pellets			



The Smart 4D Trajectory can be used to automatically analyze and evaluate **weather forecast** or **historic weather data**



Operational Analytics for Urban Air Mobility



Historic Weather Data

- Data-driven analytics of past operational conditions evaluating weather impact on future flight operations
- Supporting vertiport planning, eVTOL design verification, and evaluation of air taxi service viability
- Detailed understanding of future operating conditions

NOVA Digital Co-Pilot for flight operations



High-resolution weather forecast & observations

- Operations Management platform for drone and air taxi operations
- Pilot know-how and decision-making mechanism transferred to technology
- Underlying simulation technology designed to support piloted and fully autonomous drone operations

Smart 4D Trajectory Technology

NOVA – Weather & Ops Intelligence for professional drone airlines to safely scale their business



...flight operations manager

SMART DISPATCHING

All missions in one place – efficient resource management based on automated weather assessment for the next 7 days.

ASSET MANAGEMENT

Centralized management of all aircraft performance and ops limits, ensuring compliance throughout the organization.

TEAM ASSIGNMENT

Provide your teams with the best weather data for their drone missions and share necessary information.

...flight directors and pilots

ALL-IN-ONE WEATHER TOOL

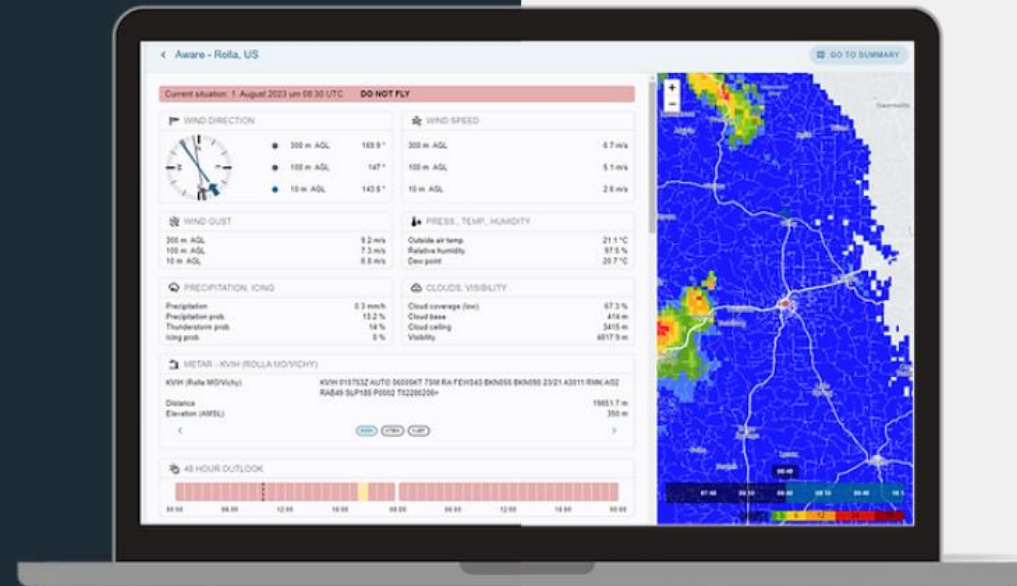
Rain radar, weather observations and high-resolution forecast. All relevant weather information in one place, globally available.

EFFICIENT FLIGHT PLANNING

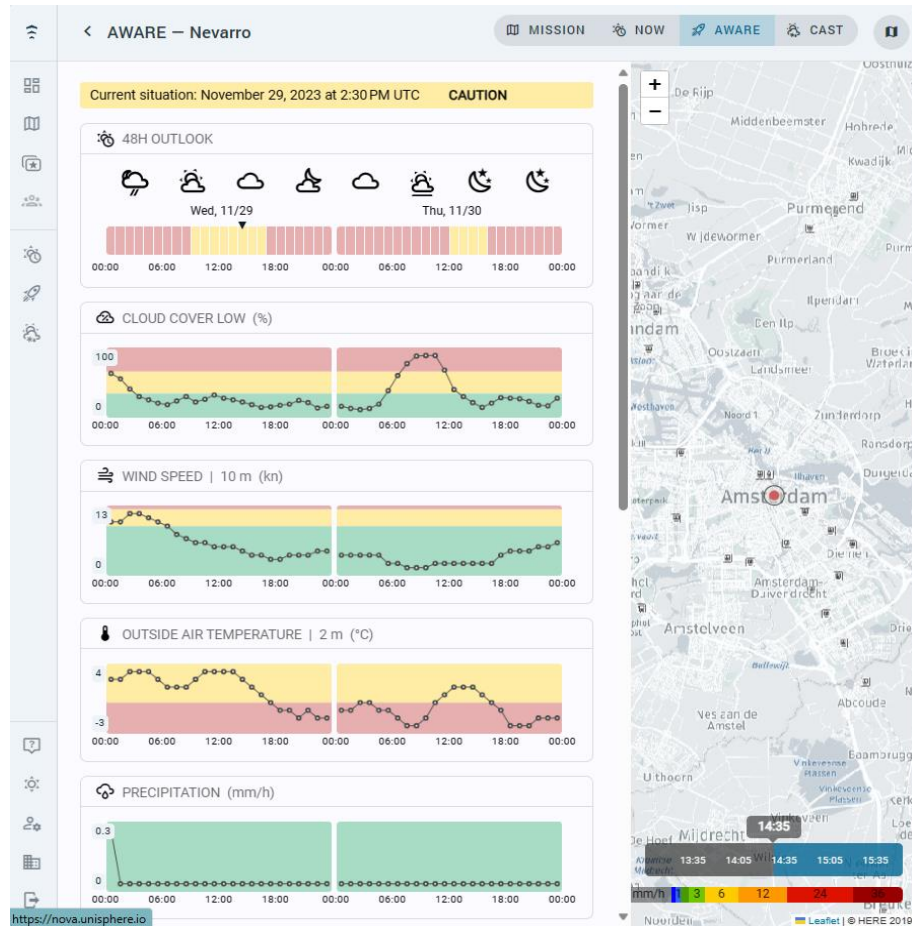
Quick go/no-go decision based on automated evaluation of weather conditions with the concept of operations for the specific mission.

WEATHER INTELLIGENCE

Automated identification of flight windows with good weather conditions for the next 48 hours.



Automated flight planning and evaluation of potential **weather risks** – supporting **BVLOS drone operations** and **eVTOL flight test**



- Weekly flight planning, automatically updated with the most recent and the most accurate forecast data
- Automated evaluation of flight windows with good weather conditions tailored to specific drone and operational limits
- Standardized and fast decision-making supports the scaling of flight operations
- Flight simulation allows a more detailed evaluation of weather conditions – considering all parameters en-route

“ With NOVA cast, Unisphere provides us with a tool that supports safety and predictability of daily flight test operations and creates a base for the 24/7 airline operations of the future. “

Dr. Patrick Nathen
Co-Founder & VP Product, Lilium

Automating Unmanned Aviation

I look forward to connecting with you and exchanging ideas on **automated flight operations, vertiport planning, and air taxi services.**



Contact



Automating unmanned aviation
to benefit everyone



Christoph Schlettig

christoph.schlettig@unisphere.de
+49 178 330 8093

UNISPHERE GmbH
Turmstrasse 5
78467 Konstanz
Germany

www.unisphere.de

Digitalization of the financial industry

Your expert for API excellence and integration

+25 years of pioneering experience in digital solutions in various sectors

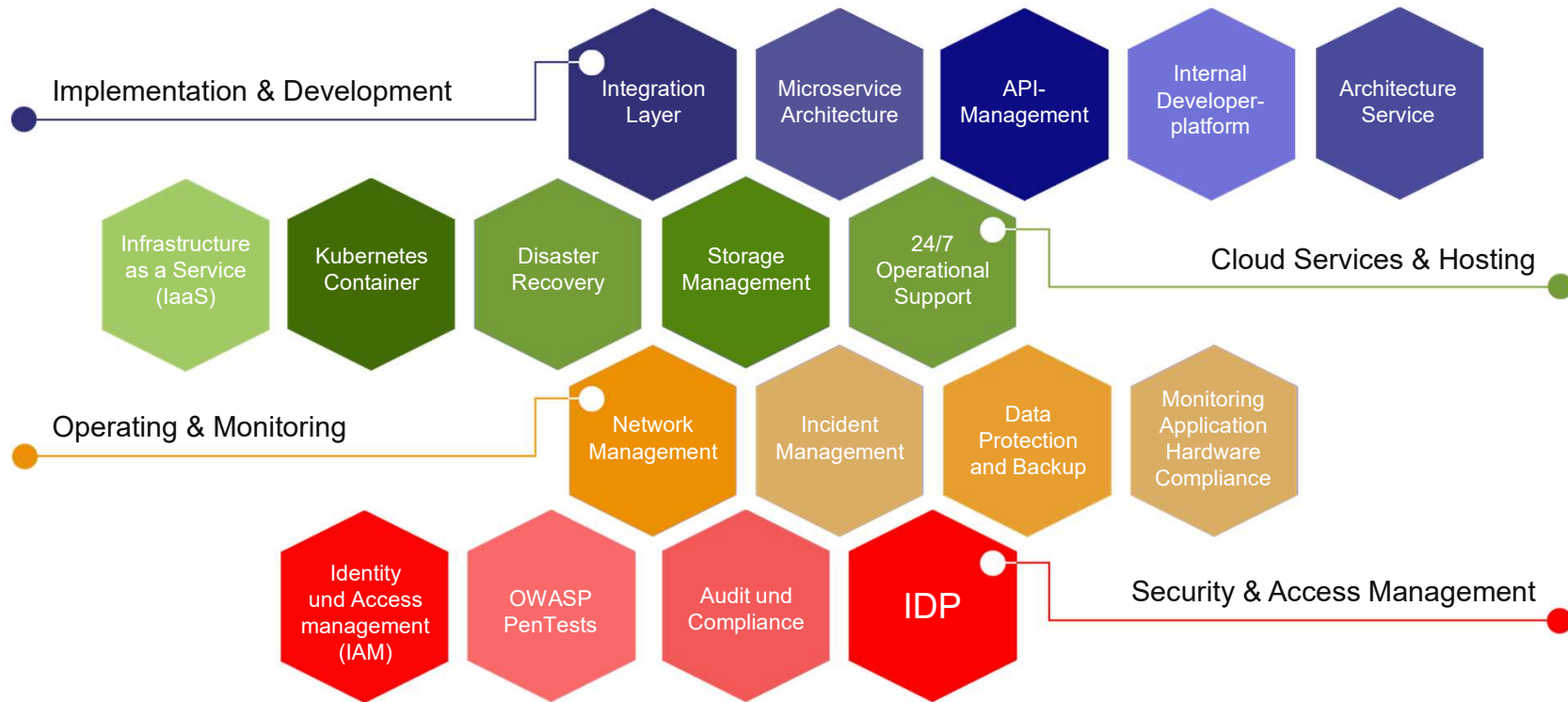
25+
Years in Business

50+
Professionals

100+
Solutions



Products, services und more



Successful projects












Finance - Solutions for ...
 PSD2 - Open Banking - OnBoarding Multibanking –
 Digital Banking - Eco-Systems
 Identity and Access Management (IAM) ...










Insurances - Solutions for ...
 Integration of insurance products and services
 directly into the digital banking environment ...










Manufacturing companies - Solutions for ...
 B2B as well as B2C Solutions
 SAP-Hosting, Maintenance and Support
 CMS & CRM Solutions ...

“radicant” - how sustainable digital banking works

Who, where and what

The radicant bank is offering banking, investment, wealth management, planning and other financial products, in ways to positively impact the planet and society.

Keywords

Kubernetes, Docker, Springboot, Google Cloud Solution Apigee, Microservices, Kafka, CDN, Identity Server, IAM, Integration-Layer, Onboarding, Native Apps

Scope

Digital Banking Backend, Integration Core-Banking, Investment, CO2 footprint tracker, E-Banking, Integration-Layer, Payment options such as eBill and a QR-bill scanner, as well as radicant TWINT, where a part of the money on the radicant accounts supports sustainable projects worldwide.



Our contribution to Sparda "TEO"

Who, where and what

Sparda Group is the 3rd largest banking group in Germany and introduced "TEO" as first lifestyle-banking with multibank-access.

Keywords

Kubernetes, Docker, Springboot, WSO2 API-Manager, Microservices, Kafka, Kibana, CDN, Identity Server, IAM, Integration-Layer, Ökosysteme, Onboarding, Xamarin, Angular

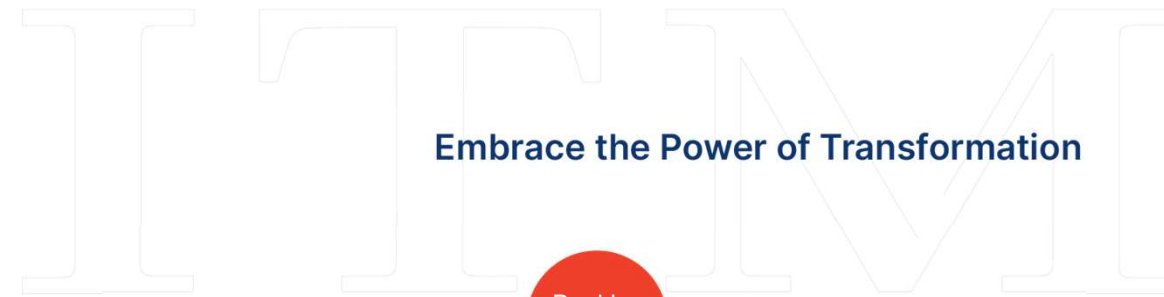
Scope

Next Gen eBanking and Mobile Banking, eBanking Backend, Integration layer to Sopra, finAPI, TeamBank, UniInvest und Mastercard Comprehensive Digital Ecosystem and Affiliate Programm, APP, WEB

Achievements

Top-ranked @ Capital in 2023





Embrace the Power of Transformation

Bank Cler “Zak” – Full-Stack development of whole project

Who, where and what

Introduced “Zak” as first mobile-only bank in Switzerland in course of re-branding and re-positioning of Bank Cler.

Keywords

Kubernetes, Docker, Springboot, IBM MQ, Microservices / Webservices, Kafka, IDP, IAM, Integration-Layer, Ökosysteme, Onboarding, Xamarin,

Scope

Integration layer zu Avaloq über MQ, eBanking Backend, Integration Viseca and KYC T&M, App iOS and Android frontends with Xamarin Framework, CMS-System and integration of a chatbot named Dr. Watson.

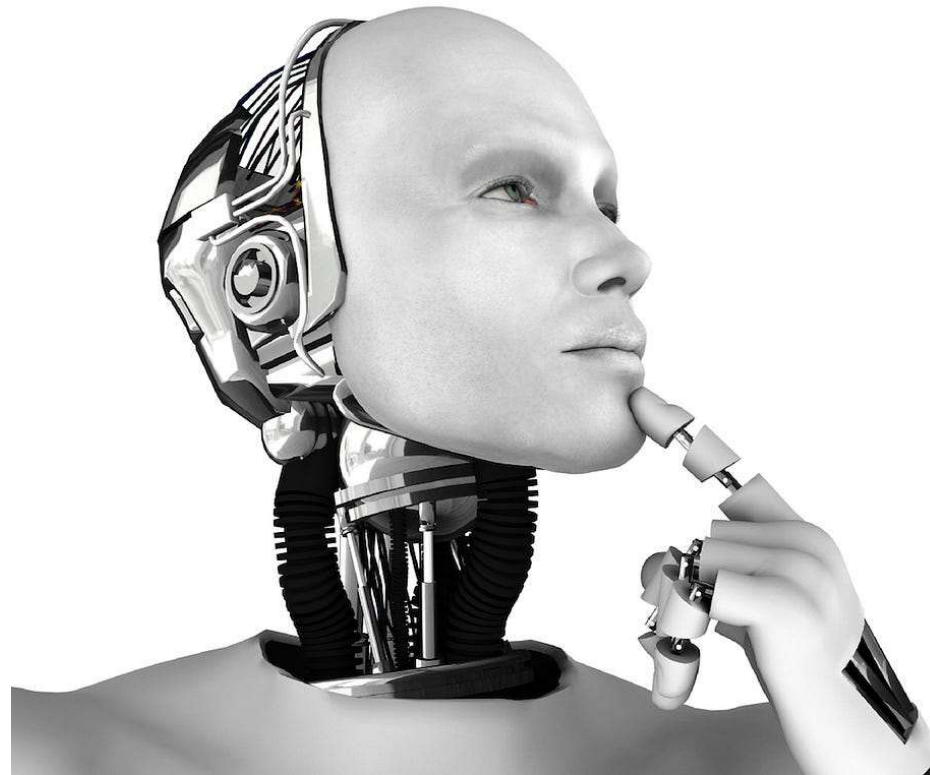
Achievements

top-ranked @3 major awards

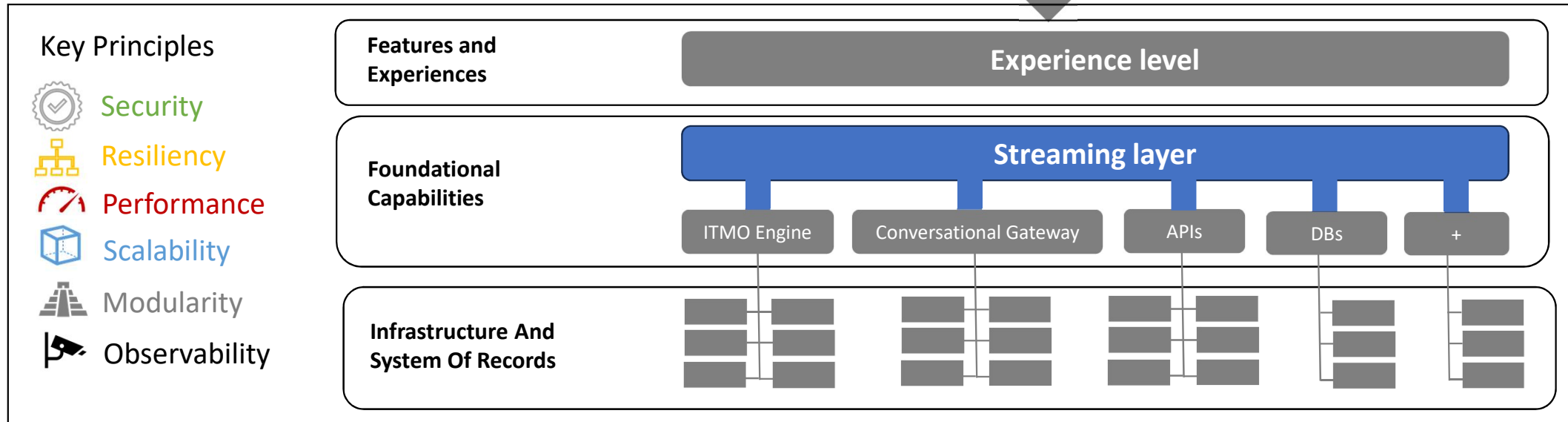
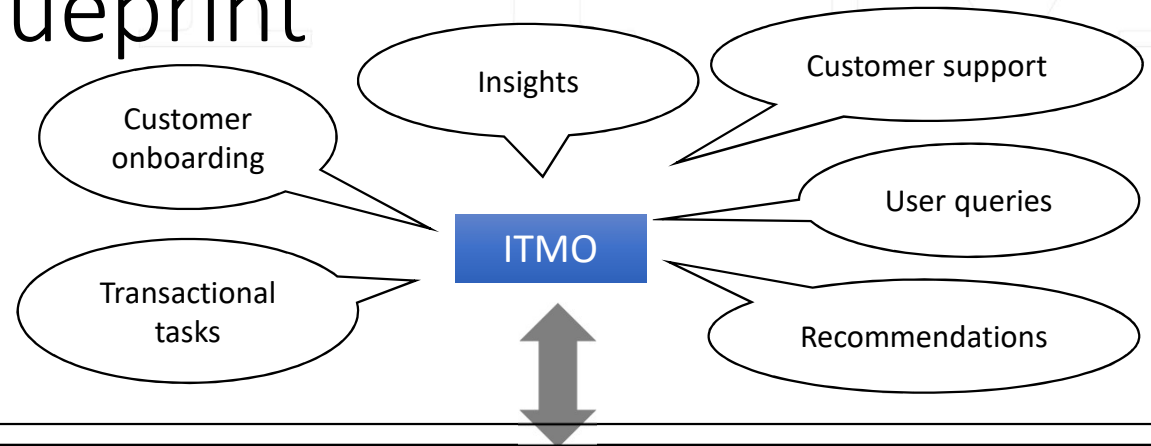
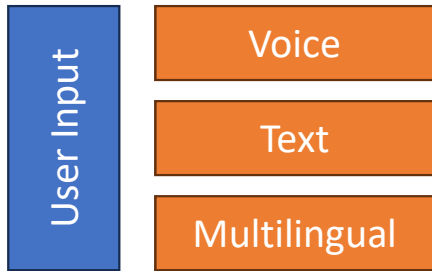


ITM AI Projects

- AI Onboarding
- BrainBOT



ITMO Architecture Blueprint



The screenshot shows the ITMO chatbot interface in English. At the top, the header reads "ITMO Welcome to Onboarding service of ITM" with a timestamp of "FEB 20, 7:00 PM". The chat history includes a "Welcome!" message and a "Choose your language:" prompt. A blue button labeled "EN" is visible. The main message says: "Hi. We are ITMR and welcome to our AI lead Onboarding service. At any point in the process you may tap the info button for additional help." Below this is a question: "Where do you live? / In which country do you live?". A follow-up instruction says: "Make a choice from the list below, or type your country:" followed by a dropdown menu with "Select..." and a downward arrow. At the bottom, there is a "Chat with ITMO" button.

The screenshot shows the ITMO chatbot interface in German. The header reads "ITMO Welcome to Onboarding service of ITM". The chat history includes a "Welcome!" message and a "Choose your language:" prompt. A blue button labeled "DE" is visible. The main message says: "Hallo. Wir sind ITMR und begrüßen Sie zu unserem AI-Leitfaden für die Einführung. Sie können jederzeit auf die Info-Schaltfläche tippen, um zusätzliche Hilfe zu erhalten." Below this is a question: "Wo wohnst du? / In welchem Land wohnst du?". A follow-up instruction says: "Wähle aus der Liste unten aus oder gib dein Land ein:" followed by a dropdown menu with "Select..." and a downward arrow. At the bottom, there is a "Chat with ITMO" button.

Embrace the Power of Transformation

- Automatic AI GPT Translation based on selected language
- User intent recognition and validation

ITM **ITMO**
Welcome to Onboarding service of ITM

Hi. We are ITMR and welcome to our AI lead Onboarding service. At any point in the process you may tap the info button for additional help.

Where do you live? / In which country do you live?

Make a choice from the list below, or type your country:

Germany

Please enter your phone number?

+49 30 683782072

We will send you code to validate your phone number.

139412

ITM **ITMO**
Welcome to Onboarding service of ITM

Hallo. Wir sind ITMR und begrüßen Sie zu unserem AI-Leitfaden für die Einführung. Sie können jederzeit auf die Info-Schaltfläche tippen, um zusätzliche Hilfe zu erhalten.

Wo wohnst du? / In welchem Land wohnst du?

Wähle aus der Liste unten aus oder gib dein Land ein:

Deutschland

Bitte geben Sie Ihre Telefonnummer ein?

+49 30 683782072

Wir senden Ihnen einen Code zur Validierung Ihrer Telefonnummer.

664810

- Customer SMS and email validation

ITMO
Welcome to Onboarding service of ITM

We will send you temporary password after you confirm you data in the next step.

Your data is:

Preferred language: EN

Country: Germany

Phone number: +49 30 683782072

Email address: myemail@outlook.com

Do you confirm these data?

Chat with ITMO

ITMO
Welcome to Onboarding service of ITM

Wir senden Ihnen ein temporäres Passwort, nachdem Sie Ihre Daten im nächsten Schritt bestätigt haben.

Ihre Daten sind:

Bevorzugte Sprache: DE

Land: Deutschland

Telefonnummer: +49 30 683782072

E-Mail-Adresse: myemail@outlook.com

Bestätigen Sie diese Daten?

Chat with ITMO

Embrace the Power of Transformation

- Customer validation and confirmation after successful registration

Key Facts about ITM Research GmbH

Total Workforce: > 90 Experts

Offices: Zürich / Vienna / Pforzheim

Expert-Profiles: Project Managers / Scrum-Masters / Product Owners

IT Solution & Technical Architects

Developers Backend / Developers Web & Mobile

DevOps / Business Analysts / Requirement Engineers

Awards:



International Banking
Tech Awards '18:
3rd category "Mobile Apps"



Constantinus-Award '18:
3rd category "Mobile Apps"



Handelsblatt
Diamond Star '18:
Finalist „Digital Banking“



Capital '20:
Top-rated FinApps



We are looking forward to continue our talks!

ITM Research GmbH

Habermehlstraße 16
DE-75172 Pforzheim

info@itmr.de

www.itmr.de

Please do not hesitate to contact us if you have any further questions or concerns.

We are always at your disposal.



Make. Growth. Possible.

People Enabler

Your partner for innovative HR management



Portfolio

- ❖ Innovative Mental Health
 - Emotional Intelligence & Competence (Trainings)
 - Strengthening Resilience & Mindfulness (Virtual Reality)
- ❖ Innovative Change Management
 - Organizational Transformation by Design
 - Design Thinking, LEGO® Serious Play®, Theory U
- ❖ Innovative HRM
 - Expert Search
 - People Analytics
 - New Pay & Performance
 - New Ways of Learning
 - Diversity, Equity & Inclusion



Mental Health

About Us



Prof. Dr. Lisa Giermindl

Professor for Leadership and HR-Management
Board of Directors

Mail lisa@people-enabler.ch

Mobil +41 76 234 57 50



Alexander Nusselt

Management Consultant, Coach,
Psychotherapy Practitioner, Trainer, Speaker & Lecturer

Mail alex@people-enabler.ch

Mobil +49 151 110 19 790

People Enabler AG
Neuseeland 16
CH-9404 Rorschacherberg
Switzerland

info@people-enabler.ch

[Web](#) | [Linkedin](#)

Partner



The logo for Deutsche Institute für Textil- und Faserforschung (DITF) is located in the top right corner. It consists of the letters 'DITF' in a bold, black, sans-serif font. The 'D' is a simple vertical bar with a curved top, 'I' is a vertical bar, 'T' is a vertical bar with a horizontal top bar, and 'F' is a vertical bar with a horizontal top bar and a short vertical stem at the bottom.

DEUTSCHE INSTITUTE FÜR
TEXTIL+ FASERFORSCHUNG

The background of the slide is a light blue and white abstract design with flowing, curved lines. A horizontal band across the middle features a green and teal textured pattern that resembles a microscopic view of a textile or fiber structure. The main title is centered in this band.

German Institutes of Textile and Fiber Research Denkendorf

29.02.2024 CORNET & IraSME Partnering Event - Dr.-Ing. Valérie Bartsch

Europe's Largest Textile Research Center

Key Figures 2022



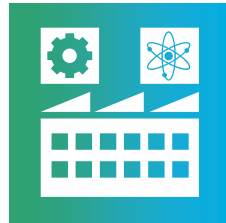
Employees

approx. **220**



Turnover

12 m € public
13 m € industry



Area

25,000 m²



Research

189 public
572 industry



Partners

1158 enterprises
67 % SME

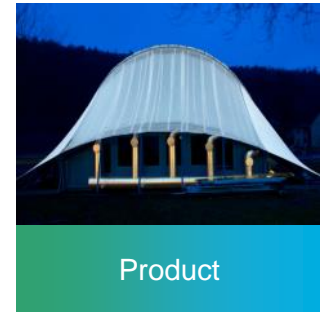
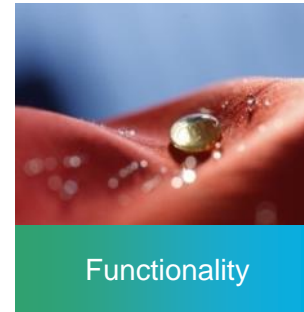
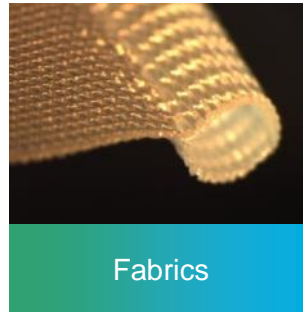
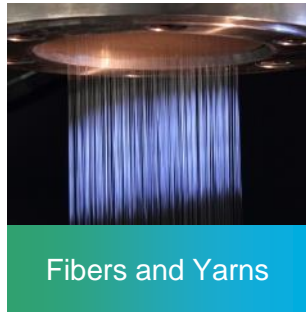


Services

approx. **100**
test customers
5 small batch series

Textile Vertical Integration

FROM MOLECULES TO PRODUCTS

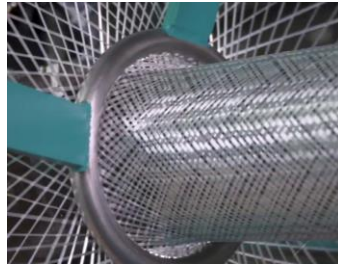


Textile Future

RESEARCH FIELDS



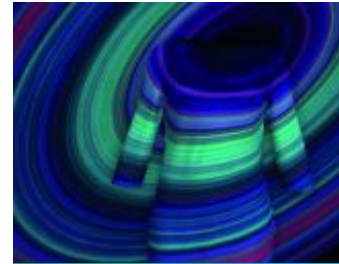
New Materials



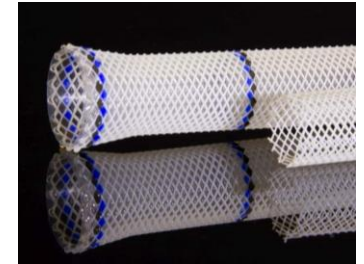
Lightweight Construction



Sustainability



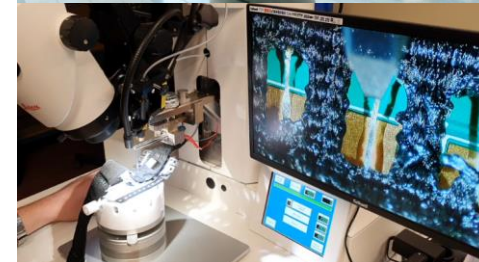
Digitalization



Health

Range of services – E-textiles

- Development of new textile-based sensors and actuators
- Integration of electronics and microsystems technology in textiles
- Rationalisation and automation of manufacturing processes for E-textiles
- Design and simulation of digital and analogue circuits
- Product-related research (e.g. health care, protective and geotextiles, sports and leisure, automotive sector)
- Development of new testing methods and characterisation of E-textiles
- Knowledge transfer for industry





DITF

DEUTSCHE INSTITUTE FÜR
TEXTIL+ FASERFORSCHUNG



The Future is Textile



Research on sustainable materials for construction

Jürgen Frick

Materials Testing Institute University of Stuttgart

Department Building Preservation

E-Mail: juergen.frick@mpa.uni-stuttgart.de

Tel.: +49-711-685-63381

LinkedIn: <https://www.linkedin.com/in/juergen-frick-74a9369/>

Institutional information and expertise:

- Central university institute
- 270 employees, 75 % funding from industry
- Notified body according to construction product regulation (CPR)
- Contacts to SMEs in construction sector

Actual projects and activities:

- INBUILT - Innovative bio/geo-sourced, re-used and recycled Products coupled with BIM circular economy and resource efficiency <https://www.linkedin.com/company/inbuilt-project/>
- SNUG – Innovative circular economy & AI methodology for sustainable and high-energy performance buildings <https://www.linkedin.com/company/snugeu/>
- Exploit4InnoMat – Design, upscaling and validation of new material concepts for the building envelope <https://exploit4innomat.eu/>
- EASI ZERo – Building envelope system for efficient zero-energy renovation <https://www.easizero.eu/>
- SensMat – Preventive solutions for Sensitive Materials of Cultural Heritage <https://www.sensmat.eu/>
- Wall-ACE – Wall insulation novel nanomaterials efficient systems <https://www.wall-ace.eu/>
- AMANAC - Advanced Material and Nanotechnology Cluster

Partner in relevant national research networks

- National Cluster of excellence Integrative Computational Design and Construction for Architecture <https://www.intcdc.uni-stuttgart.de/>
- RecyBau – Resource-saving recycled building materials of the future <https://recybau.de/>
- Gebäude-OK – Buildings without plastics <https://gebaeude-ok.de/>
- SRI ValBio – Stuttgart Research Initiative Valorization of Bioresources <https://www.valbio.uni-stuttgart.de/en/>



Robotics Lab at IntCDC
© IntCDC, Christoph Zechmeister

Stuttgart Research Initiative – Valorization of Bioresources

Network of Research institutes and SMEs <https://www.valbio.uni-stuttgart.de/>

- One focus: **Bio-based construction materials**
- A new ZIM research network will be prepared in the near future
- Our possible contribution for IraSME or CORNET proposals
 - Support and guidance for new developments of sustainable, bio-based construction materials towards certification
 - E.g. Fire behaviour, thermal conductivity, hygrothermal parameters, mechanical stability, LCA, recyclability, etc.



Bio-concrete, ©ILEK



Thermal and acoustic insulation, ©MYKOR

Our institute is partner in two ZIM networks for recycled materials

- RecyBau – Resource-saving recycled building materials of the future <https://recybau.de/>
- Gebäude-OK – Buildings without plastics <https://gebaeude-ok.de/>

Our possible contribution for IraSME or CORNET proposals

- Assessment and testing of recycled materials, identification of harmful substances
- Contacts to IBA'27 (International Building Exhibition in Stuttgart Region 2027) <https://www.iba27.de/>
- Life cycle assessment (LCA) for new developed sustainable materials
- Guidance towards a certification



Aerogels from construction waste

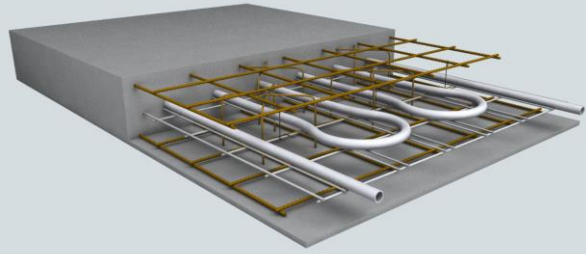


Lightweight graded concrete with lower CO₂-footprint, ©ILEK



©HOS Gruppe

TECHNICAL AND ECONOMICAL EVALUATION OF THERMAL ACTIVE BUILDING SURFACES (TABS)



Main goals:

- Literature review on TABS regarding design guidelines, modeling and simulation for building performance (using Energy Plus)
- Analysis of the impact on thermal loads and energy consumption of applying TABS on commercial buildings in Brazil
- Economical feasibility analysis of TABS's application in Brazilian market considering present and future climate scenarios (including global warming effects)
- Application of TABS technology in a small instrumented building for technical/economical validation of the technology for the Brazilian context

❑ **Project timeline:** 36 months

❑ **Project budget:** US\$140,000 (based on a currency exchange rate of R\$4,99/US\$)

❑ **Project coordination:** Prof. Nayara Rodrigues Marques Sakiyama (UFVJM/Brazil)
Prof. Alberto Hernandez Neto (USP/Brazil)
Dr. Jürgen Frick (MPA Stuttgart/Germany)

Research Project:

TECHNICAL AND ECONOMICAL EVALUATION OF THERMAL ACTIVE BUILDING SURFACES (TABS)

Martínez, et al. [DTIE 9.09 SISTEMAS DE CLIMATIZACIÓN RADIANTE](#). Atecyr, 2019.

Brazilian Company:



KRONAN
PROJETADA PARA AMAR, CONSTRUÍDA PARA DURAR

- Off-site construction process
- Taking care of the entire construction process, from the projects to the delivery of the finished house - projects from 200m²



Contact details

Contact person	Dr. Jürgen Frick
Organisation	Materials Testing Institute University of Stuttgart
Address	Pfaffenwaldring 32, 70569 Stuttgart, Germany
Phone	+49-711-685-63381
E-mail	juergen.frick@mpa.uni-Stuttgart.de
B2Match profile	https://irasme-cornet-stuttgart-2024.b2match.io/my
LinkedIn/Twitter	https://www.linkedin.com/in/juergen-frick-74a9369/

Thank you very much for your attention



INNOVATIONCAMPUS

FUTURE MOBILITY

Thilo Zimmermann, Research Coordination

ICM in a nutshell

General conditions and initial situation

- The automotive industry and production technology are essential for **employment and prosperity** in Baden-Württemberg.



- Rapidly changing conditions



- New challenges



- New possibilities

„With its ideas and projects, our Innovation Campus Future Mobility ICM is constantly opening up new options for the future – for example, in researching modern electric drives without the use of rare earths.

Here, researchers from Karlsruhe and Stuttgart are developing new, competitive solutions in mobility and production technology, thus paving the way for sustainable mobility.

As a state, we promote this spirit of innovation and strengthen Baden-Württemberg as a research location with the ICM and our other Innovation Campus models.“

Petra Olschowski, Minister for Science, Research, and Arts of Baden-Württemberg



Sustainable and digitalized production and mobility

More than...

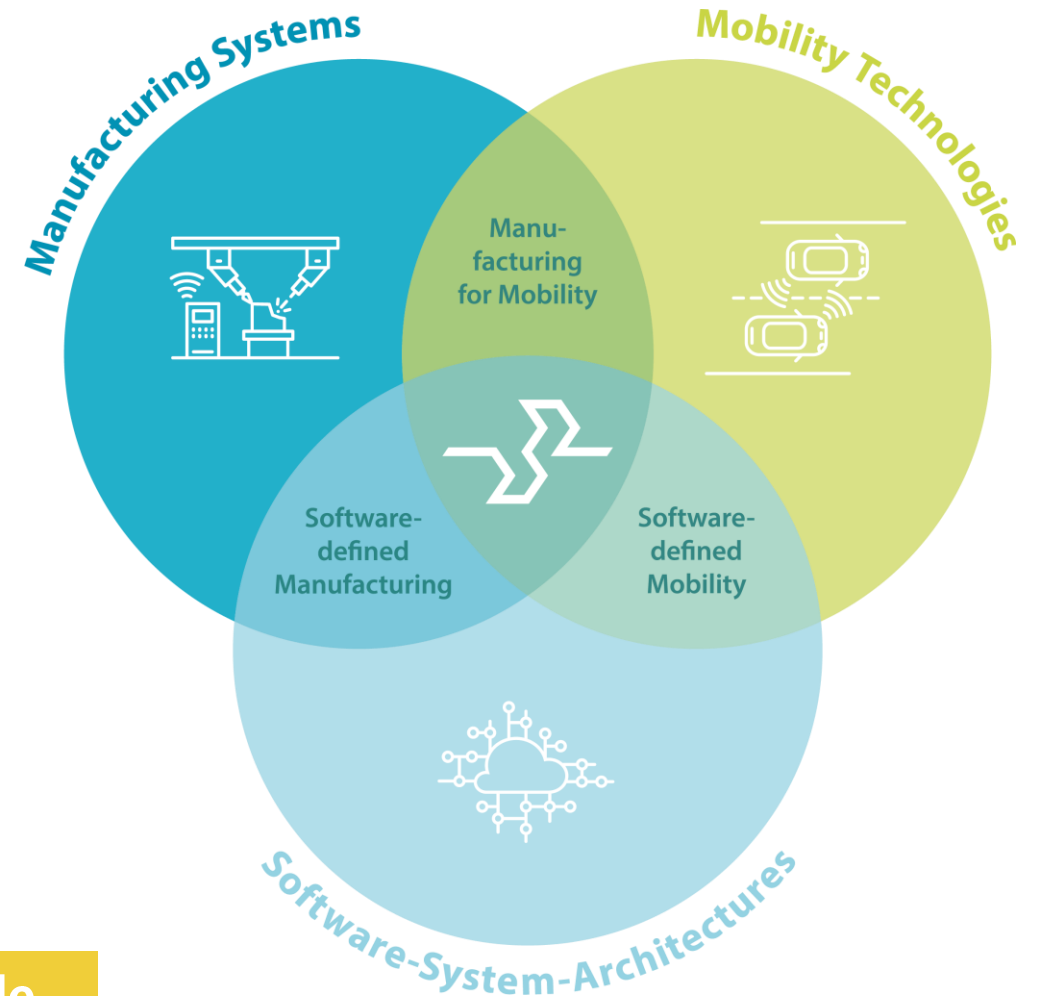
150 Research projects

50 Research institutes plus partners

300 Scientists and scholars

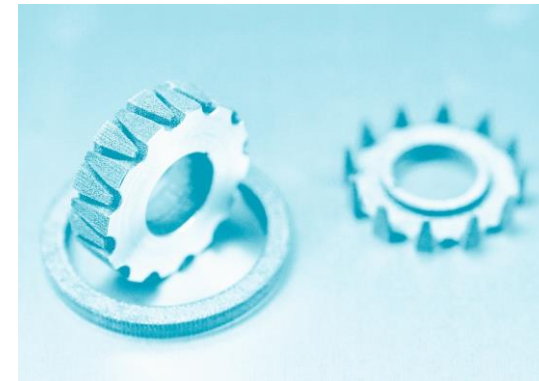
Goal: Strengthening the innovative power of the state of Baden-Württemberg and its companies, creating and securing jobs

www.icm-bw.de



Facts and figures

- More than **150 interdisciplinary research projects** in three complementary fields of research, especially at their interfaces
- More than **50 participating institutes** at the University of Stuttgart and the Karlsruhe Institute of Technology (KIT) as well as **other partners** such as the universities of Aalen and Esslingen, the Baden-Württemberg Cooperative State University, and Fraunhofer ICT and IPA
- About **300 participating scientists**
- More than **120 bachelor's and master theses** as well as more than **32 third-party funded follow-up projects**
- Well over **65 Mio. Euro funding** by the Ministry for Science, Research and the Arts Baden-Württemberg (South-West Germany)



Design of the ICM and its funding formats

International cooperation



- Networking projects with international research institutions
- Future Mobility Grants

Cross-university cooperation



- Professorships
- Junior Research Groups
- Joint Teaching
- Bottom-up projects
- Collaborative projects

Networking with industry



- Networking projects with industry
- Future Labs
- InnovationChallenges
- ICM InnovationForum
- ICM Accelerator



Future Mobility Grants

- Expansion of cooperation with international scientists and centres
- Various individual funding measures, **applications can be submitted at any time**



1 Visiting Professor/International Expert

Long-term involvement of top international researchers

3 Mid Term Fellowships for Experts

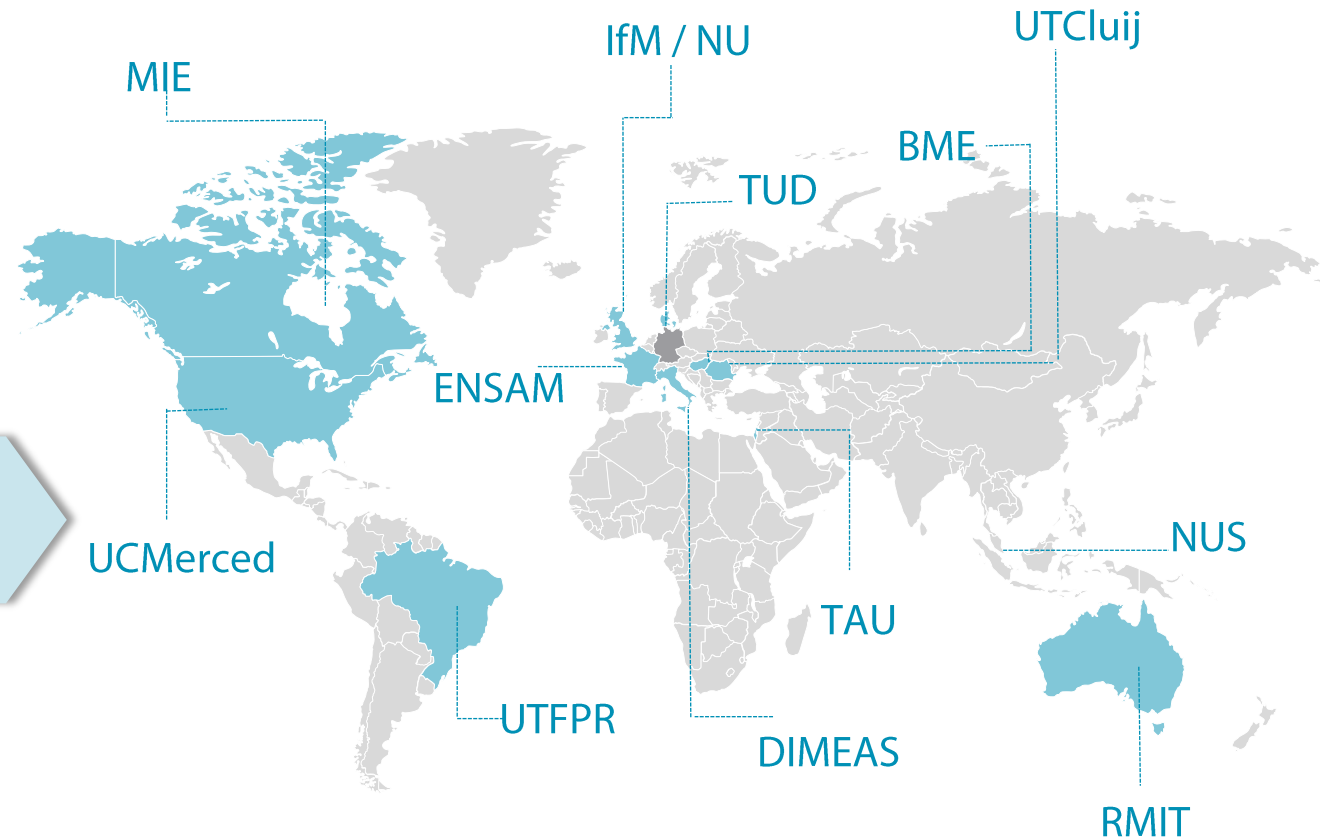
Two- to six-month stays of international senior scientists

7 Short Term Grant for Collaboration

Multiple short stays for international senior scientists

4 Short Term Grant for Talents

Several-week stay abroad for young scientists



Research Coordination

Dipl.-Kfm. Thilo Zimmermann
Head of Research Coordination
InnovationCampus Future Mobility



University of Stuttgart
Nobelstr. 15
70569 Stuttgart
Germany

Tel.: +49 711 685 60960

Email: thilo.zimmermann@icm.uni-stuttgart.de

www.icm-bw.de





Baden-Württemberg

MINISTERIUM FÜR WISSENSCHAFT, FORSCHUNG UND KUNST

Wir danken dem Ministerium für Wissenschaft, Forschung und Kunst des Landes Baden-Württemberg für die finanzielle Unterstützung des *InnovationsCampus Mobilität der Zukunft*.

